



ASKING PRICE

**£189,950**

**Marine Avenue**

Whitley Bay, NE26 1LZ

Fresh Property Centre are delighted to welcome to the market this delightful two-bedroom ground floor flat on Marine Avenue, located in the charming coastal town of Whitley Bay. Located just off the seafront, residents can enjoy the refreshing sea breeze and the picturesque views that this vibrant area has to offer.

The flat features a welcoming reception room which features double doors leading to a paved garden and easy access to the kitchen making this an ideal space for relaxation or entertaining guests. With two well-proportioned bedrooms, there is ample space for both rest and personalisation, making it a perfect home for individuals, couples, or small families. The bathroom benefits from both a bath and shower, accommodating for the urgency of busy mornings and essential relaxation at the end of the day.

This property has the advantage of being without an upper chain.

Whitley Bay is renowned for its beautiful beaches, lively promenade, and a variety of local shops and eateries, all within easy reach. This flat presents an excellent opportunity for anyone seeking a coastal lifestyle in a friendly community.

In summary, this two-bedroom ground floor flat on Marine Avenue is a fantastic choice for those looking to embrace seaside living in Whitley Bay. To avoid missing out early viewing is highly recommended.

2



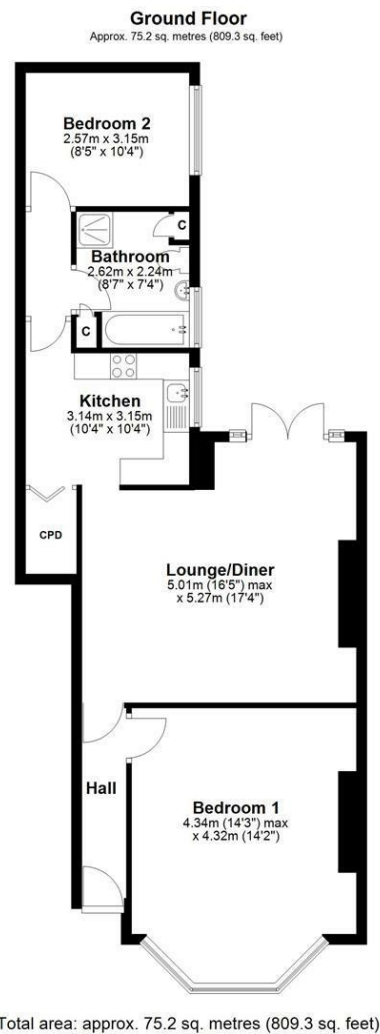
1



1







## LOCAL AUTHORITY

North tyneside

## TENURE

Leasehold

## COUNCIL TAX BAND

A

## VIEWINGS

By prior appointment only

Energy Efficiency Rating		
	Current	Potential
Very energy efficient - lower running costs		
(92 plus) A		
(81-91) B		
(69-80) C	76	80
(55-68) D		
(39-54) E		
(21-38) F		
(1-20) G		
Not energy efficient - higher running costs		
England & Wales	EU Directive 2002/91/EC	

Agents Note: Whilst every care has been taken to prepare these particulars, they are for guidance purposes only. All measurements are approximate and are for general guidance purposes only and whilst every care has been taken to ensure their accuracy, they should not be relied upon and potential buyers/tenants are advised to recheck the measurements



## OFFICE ADDRESS

63 Church Way  
North Shields  
Tyne & Wear  
NE29 0AE

## OFFICE DETAILS

0191 257 6823  
hello@fresh.property  
www.freshpropertycentre.co.uk